

ELECTRICAL LEGEND							
	CIRCUIT / DISTRIBUTION BOARD 3 PHASE, CONNECTION POINT		SWITCH : LIGHT : TWO WAY		OYSTER LIGHT WITH LED GLOBE 1x20 W		SMOKE DETECTOR - HARD WIRED
	SINGLE LIGHT SWITCH		LED LIGHT 1 x 20 W DIFFUSED		GPO - 10 AMP DOUBLE - REF HEIGHT		EXHAUST FAN - WALL MOUNTED
	DOUBLE LIGHT SWITCH		LED LIGHT 2 x 20 W DIFFUSED		GPO - 10 AMP SINGLE - REF HEIGHT		PHONE POINT : DRAW WIRE ONLY
			EXTERNAL LIGHT 1 x 20 W - W/PROOF		GPO - 15 AMP SINGLE - REF HEIGHT		
			TELEVISION POINT		ISOLATOR SWITCH W/PROOF		

ELECTRICAL NOTES:
 .. EXTERNAL LIGHTS ON SEPERATE CIRCUIT

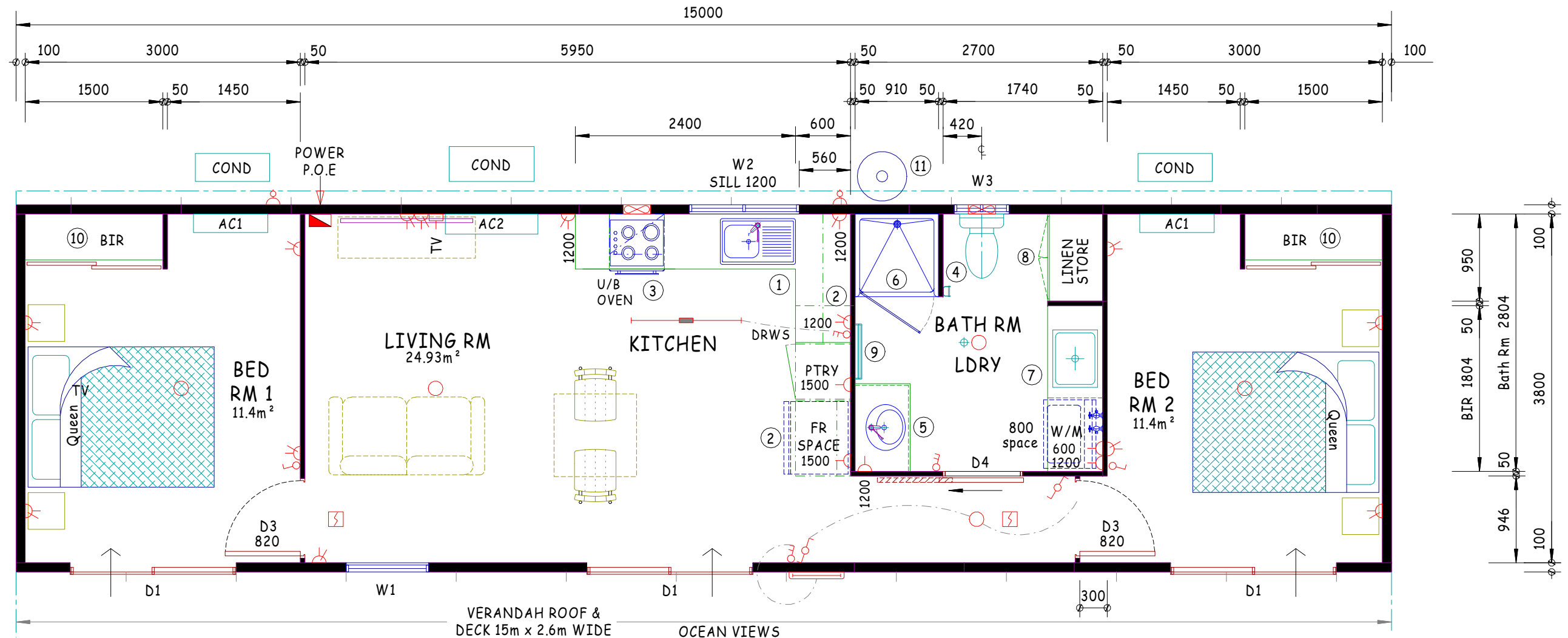
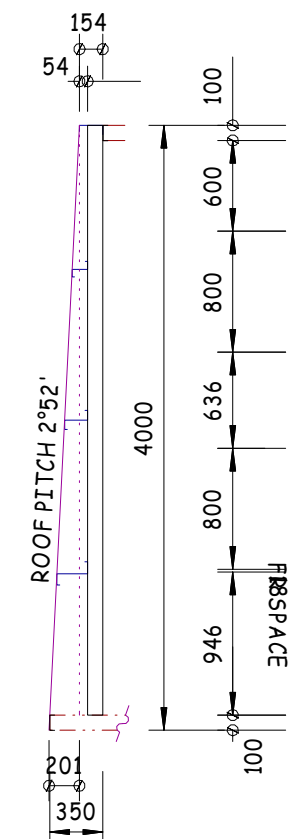
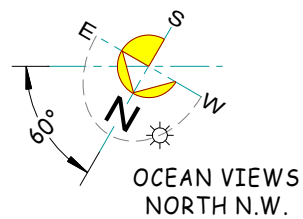
BUILDING SHORT SPECIFICATION:

- STEEL CHASSIS WITH 250UB31 MAIN BEAMS, WITH SPLAYED ENDS, REFER CHASSIS DWG.
- GAL. JOISTS 75x40x1.6 AT MAX 400 CTRS
- 2 COATS OF RUST RESISTANT PAINT.
- 19mm AQUATITE FLOORING , TERMITE TREATED.
- UNDERFLOOR INSULATION 8mm AIRCELL + R2.0 BULK.
- 2.0mm VINYL FLOOR FINISH TO ROOMS.
- 2.0mm SLIP RESISTANT VINYL FLOOR FINISH WITH 100 HIGH COVING TO BATH RM.
- WINDOW GLAZING TO BE LAM. 6.38 COMFORT PLUS.
- WALLS EXT. 100mm PANEL WITH 0.6mm C/BOND FACINGS.
- WALLS INT 50mm PANEL, 0.4mm C/BOND FACINGS.
- GALV. STEEL ROOF FRAME WITH C/BOND DECKING.
- R1.3 ANTICON INSULATION UNDER ROOF DECK .
- C/BOND EPS 100mm CEILING WITH ALUMIN. CORNICE.
- COLORBOND ROOF FLASHINGS AND CORNER TRIMS
- CEILING HEIGHT 2706.
- BAL FIRE RATED, FULLY SEAL ALL GAPS & OPENINGS REQ.'S.

EQUIPMENT LIST:

- D1 - 2143 x 1810 W ALI. SLIDING GLASS DOOR WITH 6.38 LAM. COMFORT PLUS CLEAR GLASS AND ALI. SLIDING SECURITY SCREEN DOOR, BOTH DOORS TO HAVE KEYED LOCKS.
- D2 - 2040 x 820 W EXT. C/BOND STEEL PANEL DOOR WITH KEY LOCK & FULL DOOR SEALS.
- D3 - 2040 x 820 W C/BOND STEEL PANEL DOOR WITH PASSAGE SET. [PRIVACY LOCK TO BATHROOM / LDRY]
- D4 - 2060 x 920 INT. C/BOND STEEL PANEL SLIDING DOOR WITH PELMET RAIL AND DOOR INSERT HANDLES.
- W1 - 1543 x 900 W ALI. AWNING WINDOW WITH 6.38 LAM. COMFORT PLUS CLEAR GLASS, ALI. FLYSCREEN & KEY LOCK.
- W2 - 900 x 1175 W ALI. HORIZ. SLIDING WINDOW WITH 6.38 LAM. COMFORT PLUS CLEAR GLASS, ALI. FLYSCREEN & KEY LOCK.
- W3 - 900 x 600 W ALI. HORIZ. SLIDING WINDOW WITH 6.38 LAM. COMFORT PLUS TRANS. GLASS, KEY LOCK & ALI. FLYSCREEN.
- 1 - 900 H x 600 D CUPDS WITH LAM. TOP, WITH 3 DRAWERS, S.S.SINK AND H&C MIXER TAP.
- 2 - 300 D OVER HEAD CUPDS EA SIDE OF FR SPACE & OVER FR. SPACE.
- 3 - U/BENCH OVEN, COOKTOP-ELEC, WITH EXHAUST HOOD OVER.
- 4 - V.CHINA WC PAN WITH WALL MTD DUAL FLUSH CISTERN & PAPER HOLDER.
- 5 - 900 H x 956 x 600 VANITY CUPD WITH INSET VANITY BASIN AND MIRROR OVER.
- 6 - 900 x 900 FIBREGLASS SHOWER CUBICLE WITH GLAZED PIVOT DOOR SHWR SCREEN.
- 7 - 600 D LAUNDRY CUPD WITH LAM. TOP, S.S. INSET TROUGH WITH FRONT LOAD W/M SPACE UNDER.
- 8 - LINEN CUPD WITH DBL DOORS & SHELVES.
- 9 - 600 L DOUBLE TOWEL RAIL.
- 10 - BIR WITH SHELF & CLOTHES HANGING RAIL.
- 11 - 150 LITRE ELECTRIC HOT WATER SYSTEM, HEAT PUMP PRE-FITTED SUPPLY UNIT FOR SITE CONN. BY OTHERS.
- .. 'TECO' AIR CONDITIONER R/CYCLE SPLIT SYSTEM WITH COND MTD. ON CHASSIS OUTRIGGERS.
- AC1 - 2.64 KW COOLING CAPACITY.
- AC2 - 7.0 KW COOLING CAPACITY.
- NOTE - ALL LOOSE FURNITURE, W/M, FRIDGE BY OTHERS.

COLOUR SCHEDULE: TBC			
CHASSIS	- BLACK	ALUMIN. INT. WALLS	- SURFMIST
ROOF DECKING	- SURFMIST	INT. DOORS	- SURFMIST
EXTERNAL PANEL	- SHALE GREY	VINYL	- TBC
ROOF FLASHINGS	- WINDSPRAY	SLIP RES. VINYL	- IRONBARK
WINDOWS	- BLACK SATIN	SKIRTING	- MATCH VINYL
EXT. DOOR FRAME	- WINDSPRAY	CEILING	- SURFMIST
SKIN EXT. DOOR	- SHALE GREY	CUPD TOP	- TBC
ALUMIN.	- SURMIST	CUPD DOORS	- TBC



A	22.01.25	CONCEPT PLAN	DCT	STANDARD DESIGN BUILDING DESIGN CRITERIA WIND LOAD - IN ACCORDANCE WITH AS.1170.2-2021 REGION A TERRAIN CATEGORY 2 WIND SPEED - V500 = 45 m/s	 PH: 0418 937 886 RYAN PIGDON Email: info@rivlowportables.com.au A: 653 Karnup Rd.HOPELAND. W.A. 6125	BUILDING / DWG TITLE:	GENERAL PLAN / ELECTRICAL LAYOUT 15.0 x 4.0 m 1 BED Rm LIVING QUARTERS		DRWG No:	P25007-PLN	
	REV	DATE				DETAIL	BY	COMPANY / CLIENT: RP-RIVLOW Portables	SITE LOCATION:	Lot 26 RIVER HILL VIEW, JURIE BAY, W.A.	
									CHECKED BY: CLH		DATE: 21.01.25